

---

## CONCOURS ALPHA

### ANNALES ANGLAIS

<b>Durée de l'épreuve</b>	45 minutes
<b>Candidats de Terminale concernés</b>	Toutes séries (S-SVT, S-SI, STI2D, STL, ES)
<b>Nombre de questions du sujet</b>	50
<b>Nombre de réponses attendues</b>	50

#### Consignes à lire avant de répondre aux questions

Cette épreuve comporte deux parties indépendantes que vous pouvez traiter dans l'ordre de votre choix :

- Partie 1 : 20 questions de compréhension de texte.
- Partie 2 : 30 questions de grammaire et de vocabulaire.

**Chaque candidat devra répondre correctement aux 50 questions posées pour pouvoir obtenir la note maximale.**

Pour chacune des questions posées, plusieurs réponses vous sont proposées et une seule est exacte. Vous devrez reporter votre choix sur la grille de réponse qui vous est fournie en début d'épreuve :

- Toute bonne réponse vous apporte deux points (+2 points) ;
- Toute mauvaise réponse vous retire un point (-1 point) ;
- Toute non réponse ou annulation de réponse ne vous rapporte et ne vous enlève aucun point (0 point).

L'usage de la calculatrice ou de tout autre moyen de communication est interdit.

Il ne vous sera fourni qu'une seule grille de réponse pour l'épreuve. En cas d'erreur sur votre choix de réponse, vous pouvez modifier ce dernier selon les consignes présentées en page 2.

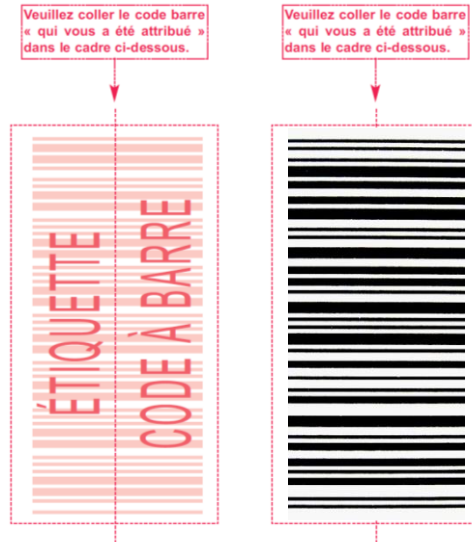
Néanmoins, en cas de force majeure, une seconde feuille pourra vous être fournie par un surveillant.

## Instructions importantes pour remplir la grille de réponse

Les réponses aux questions doivent être reportées sur la grille de réponse qui vous a été remise en début d'épreuve. Cette grille sera corrigée automatiquement. Afin que vos résultats puissent être pris en compte, nous vous demandons de respecter scrupuleusement les consignes ci-dessous :

### Identification de votre grille de réponse

- Veillez à reporter votre identité dans l'emplacement réservé à cet effet en haut de la grille de réponse ;
- Collez sur votre grille de réponse le code barre qui vous a été remis en début de journée selon le modèle ci-contre. Le code-barres doit être collé dans le sens vertical.
- N'oubliez pas de renseigner l'intitulé de l'épreuve en noircissant la case correspondante au milieu de votre grille de réponse.



- Pour renseigner vos réponses, utilisez un **stylo bille** ou une **pointe de feutre de couleur noire ou bleue** selon la consigne ci-dessous :



- Ne pas raturer votre réponse, ne pas tenter de gommer ou d'utiliser d'effaceur sur votre grille de réponse ;
- Ne pas froisser ou plier votre grille de réponse.

### Modifier votre réponse

- Chaque case de réponse dispose de deux lignes. Vous devez renseigner votre réponse sur la première ligne de la case. Si vous souhaitez modifier votre réponse, renseignez votre nouveau choix sur la deuxième ligne de la case comme indiqué sur l'exemple ci-dessous.



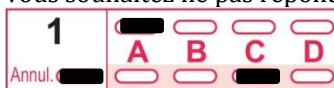
Réponse A



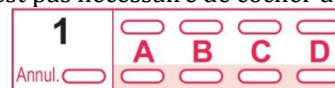
Réponse C

### Annuler votre réponse ou ne pas répondre

- Pour annuler totalement votre réponse à une question (première ligne et deuxième ligne) vous devez cocher la case « Annul. » qui se situe sous le numéro de la question.
- Si vous souhaitez ne pas répondre à une question, il n'est pas nécessaire de cocher de case



Réponse Annulée



Non réponse

---

**The following paragraphs are taken from an article about schools in the U.K. ([www.theguardian.com](http://www.theguardian.com)).**

**Read each paragraph and answer the questions which follow. There is only ONE correct answer to each question.**

1. The staffing crisis in schools is being exacerbated by an exodus of newly qualified teachers who are “flocking abroad” to work in the rapidly growing international sector, including branches of England’s elite public schools, it has been claimed. Sir Michael Wilshaw, who is the chief inspector of England’s schools, warns that the country is facing a “teacher brain drain” at a time when schools across the country are already struggling to fill vacancies amid rising pupil numbers.
1. What is said about schools in the U.K.?
    - a. **They are facing a worsening crisis.**
    - b. They have no vacancies for teachers.
    - c. They are becoming increasingly elitist.
    - d. They have fewer pupils than before.
  2. The expression ‘brain drain’ is used to refer to:
    - a. **An exodus of qualified people.**
    - b. A surplus of qualified people.
    - c. A quota of qualified people.
    - d. An influx of qualified people.
2. Lured by enticing offers of competitive, tax-free salaries, free accommodation and a warmer climate, teachers are taking their hard-earned qualifications to the Gulf states, the far east and beyond, where there is growing demand for a “traditional” English education, says Wilshaw. In turn, schools in England are increasingly having to look overseas to recruit their own staff – from countries as diverse as Jamaica, Canada, South Africa and Australia – in order to get sufficient teachers in front of classes.
3. Which of the following is NOT given as a reason to explain why some teachers are leaving the U.K.?
    - a. They can earn more money abroad.
    - b. They can benefit from tax free salaries.
    - c. They can enjoy better weather.
    - d. **They can rent cheaper accommodation.**
  4. How are schools in England dealing with the shortage of teachers?
    - a. They are hiring unqualified teachers.
    - b. They are opening schools abroad.
    - c. **They are hiring teachers from other countries.**
    - d. They are increasing the number of pupils per class.
  5. The word ‘beyond’, in the second line of the paragraph, could best be replaced by:
    - a. Somewhere
    - b. Nowhere.
    - c. **Elsewhere**
    - d. Anywhere.
-

3. In his regular monthly commentary as head of the schools watchdog, Ofsted, Wilshaw writes: "Anyone regularly perusing the job vacancy pages of the education press cannot help but notice just how many of our elite public schools are busy opening up international branches across the globe, especially in the Gulf states and the far east," he says. "Two years ago, there were 29 of these overseas franchises. At the end of 2015, there were 44 and the number will rise again in the coming months with several new campuses scheduled to open soon.
6. According to Mr. Wilshaw many of the U.K.'s elite schools:
- Are recruiting more students from the Gulf States.
  - Are no longer advertising teacher vacancies.
  - Are having difficulty recruiting new teachers.
  - Are rapidly expanding overseas.
7. The phrase 'cannot help but notice', in line 2, could best be replaced by:
- cannot mind noticing.
  - cannot stand noticing.
  - cannot avoid noticing.
  - cannot deny noticing
8. What is implied about the jobs advertised in the education press?
- Most of the jobs advertised are for schools in the U.K.
  - There are more applicants for teaching positions than before.
  - There are fewer applicants for teaching positions than before.
  - There are more and more international job opportunities.
4. It's part of a worldwide boom in international schools – many of which follow a British-style curriculum and use the English language – which is fuelling demand for UK-trained teachers. And it will only get worse, Mr. Wilshaw says, with research by the International School Consultancy suggesting that the number of international schools is expected to almost double from 8,000 now to more than 15,000 by 2025.
9. What does the research by the International School Consultancy indicate?
- The number of international schools is set to increase.
  - U.K. teachers are not sufficiently qualified to work in international schools.
  - International schools have all adopted the British curriculum.
  - The number of international schools will peak in 2025.
10. The verb 'get worse', in line 2-3, means:
- Disintegrate.
  - Deviate.
  - Dissipate.
  - Deteriorate.

5. To address the teacher recruitment and retention crisis, Wilshaw once again called for financial incentives to ensure trainees start their teaching career in areas where they are needed most. "As far as I'm concerned, that means Barnsley not Bangkok, Doncaster not Doha, and King's Lynn not Kuala Lumpur. Is it unreasonable to ask someone who has been trained in our system to make a contractual commitment to teach in that same system for the first few years of their career? I would, therefore, once again urge policymakers to consider the idea of some form of 'golden handcuffs' to keep newly qualified teachers working in the state system that trained them for a period of time."

11. According to Mr. Wilshaw, one solution to the crisis in U.K. schools would be:

- a. To pay newly-qualified teachers a bonus for staying in the U.K.
- b. To recruit more teachers from abroad.
- c. To impose financial penalties on teachers who move abroad.
- d. To oblige teachers entering the profession to work for a specific time within the U.K.

12. The verb 'urge', in line 6, is closest in meaning to the verb:

- a. Persuade.
- b. Argue.
- c. Encourage.
- d. Convince.

6. Leora Cruddas, director of policy at the Association of School and College Leaders, said: "The idea of 'golden handcuffs' to keep teachers in this country for a period of time is an interesting one which deserves more examination. "Our view is that more needs to be done to incentivise teaching as a career. We would suggest that government undertakes to write off, over a period of time, the undergraduate tuition fees of students who become teachers, as long as they remain in the state system in this country during that period."

13. What does Leora Cruddas say about the idea of 'golden handcuffs'?

- a. It is unworkable.
- b. It deserves further consideration.
- c. It is inappropriate.
- d. It would be too costly.

14. What does Leora Cruddas suggest the government should do to encourage students to choose teaching as a profession?

- a. Increase starting salaries.
- b. Reduce the time it takes to qualify as a teacher.
- c. Subsidies their university education.
- d. Reduce the number of pupils per class.

7. Russell Hobby, general secretary of the school leaders' NAHT union, said: "The government must look at why some teachers are choosing to work abroad at a time of shortages in the UK. "Pay flexibilities do not work when schools have insufficient funds to use them; enforced pay freezes are making starting salaries uncompetitive. Excessive workload, poorly planned change and constant criticism drive out experienced teachers. We don't need golden handcuffs to keep trained teachers in the UK. We just need to treat them with respect. It has the advantage of being cheaper, as well as being the right thing to do."

15. What does Russell Hobby think the government should do?

- a. Understand why teachers are choosing to work abroad.
- b. Introduce more flexibility for teachers' pay.
- c. Hire less experienced teachers.
- d. Freeze teachers' pay.

16. According to Russell Hobby, which of the following is NOT a reason to explain why teachers are moving to other countries?

- a. Their salaries are too low.
- b. They have too much work.
- c. They are too often criticized.
- d. They need to acquire international experience.

8. A government spokesperson said: "As part of our drive to achieve educational excellence everywhere, we want all schools to be able to recruit high-quality teachers. It is disingenuous to suggest our approach is not working – despite the challenge of a competitive jobs market, the proportion of trainee teachers with a top degree has grown, faster than in the population as a whole, and there are more teachers overall.

17. The word 'disingenuous', in line 2, means: **question annulée**

- a. Intolerant.
- b. Unavoidable.
- c. Unacceptable.
- d. Insincere.

18. According to the spokesperson, the government's educational policy:

- a. Has improved educational standards.
- b. Needs to be improved.
- c. Has allowed more pupils to enter university.
- d. Has led to an increase in the number of teachers.

9. "But we are determined to continue raising the status of the profession. That's why we're investing hundreds of millions in teacher recruitment, backing schemes like Teach First and the National Teaching Service to get great teachers where they are most needed, and why we've given schools unprecedented freedom over staff pay, to allow them to attract the brightest and the best. "The number of former teachers returning to the classroom has increased year on year – further evidence of the popularity of the profession – recent research shows that the number of teachers leaving the profession to work abroad is 1%."

19. 'A former teacher' (line 5) is someone who:

- a. Was previously a teacher.
- b. Trains other teachers.
- c. Teaches only at elementary level.
- d. Is no longer qualified to teach.

20. What does the government claim it is doing?

- a. Making teaching more attractive as a career.
- b. Opening new schools abroad.
- c. Increasing the number of classrooms.
- d. Reducing the number of teachers leaving the profession.

---

**Select the correct answer (a – d) to each question and mark it on your answer sheet. There is only ONE correct answer to each question.**

21. \_\_\_\_\_ the delays caused by the bad weather, the engineers are confident that the new stadium will be completed on schedule.
- a. **Despite**
  - b. Although
  - c. Even though
  - d. While
22. \_\_\_\_\_ a cash prize, the winner of this year's Business Start Up competition will receive expert advice from a team of business consultants.
- a. Moreover
  - b. **In addition to**
  - c. Furthermore
  - d. Together
23. When Ms. Lee arrives at the airport she \_\_\_\_\_ by a chauffeur and taken to her hotel.
- a. will meet
  - b. meets
  - c. **will be met**
  - d. will be meeting
24. The Excelsior Hotel's \_\_\_\_\_ location makes it the ideal place for guests who are attending events at the nearby convention center.
- a. **convenient**
  - b. conveniently
  - c. convenience
  - d. convened
25. Private individuals may sign up for flight training \_\_\_\_\_ that they pass the mandatory medical check-up.
- a. as long
  - b. **on condition**
  - c. except
  - d. whether
26. Neither the CEO \_\_\_\_\_ the Chairman of the board could have imagined that the company was about to lose one of its biggest clients.
- a. either
  - b. both
  - c. or
  - d. **nor**
27. The results of the latest survey have revealed \_\_\_\_\_ higher levels of atmospheric pollution than expected.
- a. significance
  - b. significant
  - c. signification
  - d. **significantly**



28. Janet left the country three years \_\_\_\_\_ and we haven't heard from her since then.
- from
  - ago
  - since
  - away
29. Before \_\_\_\_\_ promoted to regional manager, Julietta Galfard was in charge of customer prospection.
- being
  - to be
  - is
  - has been
30. The city council recently \_\_\_\_\_ in favour of the mayor's plan to renovate the waterfront area.
- votes
  - voting
  - voted
  - will vote
31. \_\_\_\_\_ of emergency repairs to the Valley Bridge, traffic is currently restricted to one single lane.
- Because
  - Due
  - As
  - Therefore
32. Unfortunately, the Green garden restaurant was fully booked so we have reserved tables at the Orient Palace \_\_\_\_\_.
- otherwise
  - although
  - however
  - instead
33. Additional funds have been allocated to the project for use \_\_\_\_\_ of cost overruns.
- in case
  - provided
  - in order
  - so that
34. Alain Jefferson, \_\_\_\_\_ grandfather founded the business in 1953, will be taking over as managing director early next year.
- whose
  - who
  - whom
  - that
35. Several of our hotel guests have said how \_\_\_\_\_ they were with the quality of the food and service.
- disappointing
  - disappoint
  - disappointed
  - disappointment

36. Lydia offered to help us to install the software but in the end we were able to do it by \_\_\_\_\_.
- us
  - ourselves**
  - ours
  - our
37. Julia Weinmann and David Stockbridge are \_\_\_\_\_ the artists who will be displaying their works at the Community Centre next month.
- along
  - among**
  - aside
  - apart
38. Members wishing to attend the annual dinner \_\_\_\_\_ to book early as seats are limited.
- must
  - could
  - should
  - need**
39. \_\_\_\_\_ most supermarkets offer packaged goods, SaveWise stores sell only bulk goods that shoppers can place in recyclable bags.
- Meanwhile
  - Whereas**
  - In spite of
  - Otherwise
40. Applications for the reimbursement of travel expenses will not be accepted \_\_\_\_\_ they are accompanied by receipts.
- without
  - unlike
  - beyond
  - unless**
41. The instruction manual was written in Japanese so we had to have it \_\_\_\_\_ into English.
- translated**
  - translating
  - translation
  - translator
42. Taking the train to the airport is not only cheaper \_\_\_\_\_ also much faster than going there by taxi.
- so
  - but**
  - beside
  - and
43. \_\_\_\_\_ the festival season, the city hosts performances by both amateur and professional theatre groups.
- During**
  - While
  - Between
  - From

44. If we had known that you were coming, we \_\_\_\_\_ for you to stay with us.
- have arranged
  - would have arranged
  - arrange
  - will arrange
45. Because Ms. Wang had been working long hours in order to complete the project, her supervisor suggested that she \_\_\_\_\_ some time off.
- to take
  - taken
  - taking
  - take
46. Mr. Vass will be working on the designs for the new model \_\_\_\_\_ with two of his colleagues from the graphics department.
- along
  - among
  - amid
  - beside
47. Jason Grange will be taking \_\_\_\_\_ from Ms. Rodgers when she retires at the end of the month.
- over
  - away
  - on
  - out
48. When Mr. Pankash reaches sixty he \_\_\_\_\_ thirty years in the company.
- has been completing
  - will be completed
  - will have completed
  - completed
49. Due to a printing error in the new brochure, the address that \_\_\_\_\_ for our company's headquarters was incorrect.
- gives
  - was given
  - gave
  - was giving
50. Ms. Jackson has been chosen to lead the project because she is the engineer who has the \_\_\_\_\_ experience in this highly specialized field.
- most
  - more
  - much
  - many

**FIN DE L'ÉPREUVE**